

An all-purpose

A 35mm Single-Lens Reflex

Asahiflex



MANUFACTURERS
& EXPORTERS

ASAHI OPTICAL CO., LTD.

980.Maenochō, Shimura, Itabashi-ku, Tokyo, Japan.



Its Sensational Asahiflex

SPECIAL ASAHI FLASH GUN

If flash bulb (F.P.) for the focal-plane shutter is used and Special ASAHI flash-gun is plugged into the concentric terminals sockets of the built-in synchronizer, it will be obtainable accurate synchronization at any shutter speed.



Easy to use both B.C. and standard flash-gun in satisfactory



ASAHI FLEX MODEL 1 A with standard coated lens, helical focusing device and built-in pre-set aperture ring

Type Single-lens reflex.

Film 35mm miniature camera film (daylight loading magazine used)

Picture size 24 X 36mm makes (20 or 36) exposures.

Standard lens Takumar f:3.5 50mm coated lens with helical focusing device and pre-set aperture ring

Shutter Focal plane shutter built-in synchro. speeds rating B. $\frac{1}{25}$. $\frac{1}{60}$. $\frac{1}{100}$. $\frac{1}{200}$ and $\frac{1}{500}$ sec.

Focusing Focusing is secured by turning the lens barrel while observing the image on the focusing glass, produced by the lens with the aid of the reflector-mirror set at an angle of 45°. (A magnifier, through which the entire image on the ground glass can be seen enlarged,

is attached).

The focusing glass is made of plano-convex lens, and its base is etched carefully in order to produce an extremely bright image.

Viewfinder with built-in eye-level optical viewfinder.

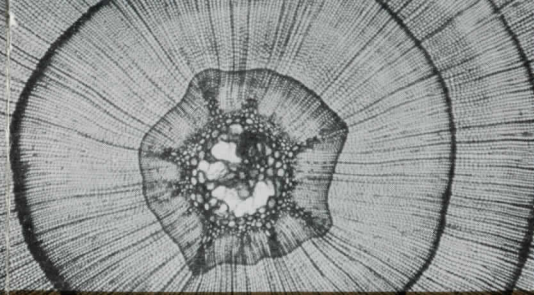
Synchronizer Built-in concentric terminals, which are located in the front of the camera.

Double exposure prevention For the purpose of preventing double exposure, the shutter and film are wound simultaneously.

Interchanging of lenses Every Takumar lenses can be easily mounted by screwing into the camera body, and close-up effects is obtainable by using of the various extension tubes.

For snapshots Taken with Takumar 135mm at $\frac{1}{500}$ sec. For portraiture Taken with Takumar 100mm lens For landscape Taken with Takumar 50mm lens





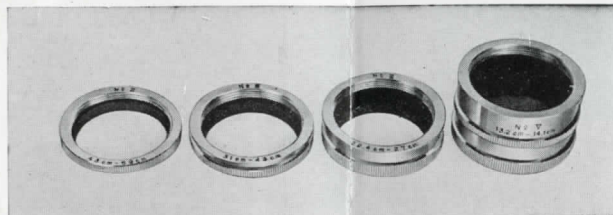
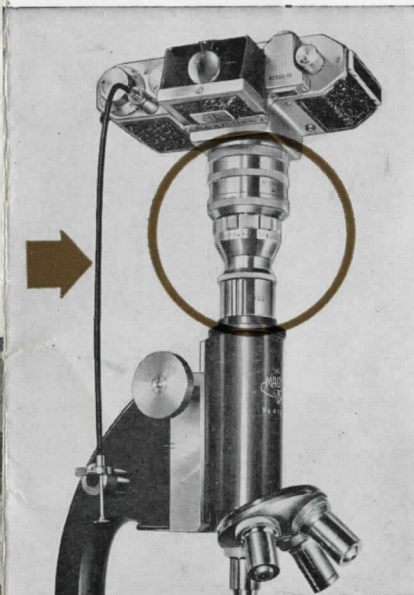
Photographed by using of photomicrographic adapter

For close-up photo for small objects

Taken with 50mm standard lens and special extension tubes

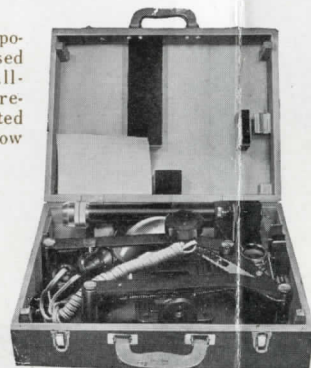
**PHOTOMICROGRAPHIC
ADAPTER**

With the aid of the adapter shown in the figure (encircled) the camera can be simply fastened to microscopes.



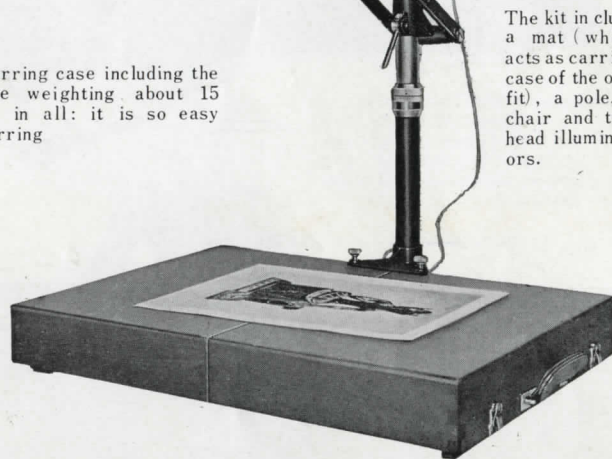
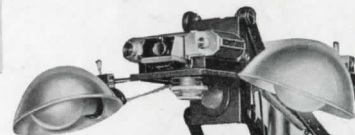
Special extension tubes for Close-up photography
These are available as one set in four pieces

For time exposure, to be used the special all-metal cable release (indicated with the arrow in fig.)



The carrying case can act as the mat, the chair of the kit can be lowered or raised comfortably, as it is connected to pantagraph, and it can be set any direction by which it will be convenient for taking small objects.

**ASAHI FLEX
REPRODUCTION KIT**



The kit includes a mat (which acts as carrying case of the outfit), a pole, a chair and two head illuminators.

Most Versatile Single Lens

Asahiflex



High Precision Takumar

A variety of Interchangeable lenses to Assist the Single-Lens Reflex Camera in Manifesting its True Worth



Standard Takumar Lens
f:3.5 50mm coated

Pre-Set Diaphragm Control Essential to Single-Lens Reflex Camera

You can see what you are shooting full brightness up to the instant you press the shutter release. A simple flick of the control ring and your lens instantly adjusts to the pre-set opening.



Takumar Lens
f:3.5 100mm



Takumar Lens
f:3.5 100mm
Particularly suitable for candid work

Takumar Lens
f:1.9 83mm
An universal lens, Suitable for Portraiture and night-photography

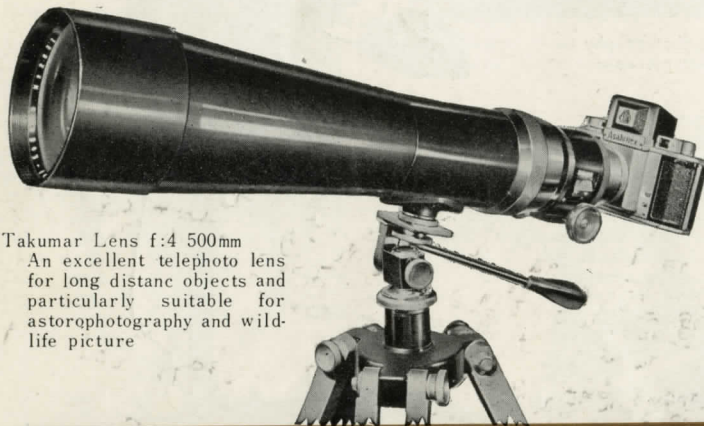


Takumar Telephoto Lens
f:3.5 135mm
Specially designed in light-weight, Suitable for telephoto work

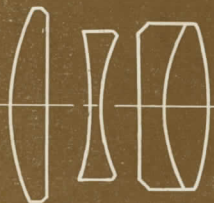


Taken with Takumar
500mm Telephoto-lens

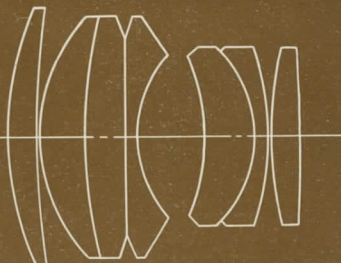
Photo by Sakae Tamura



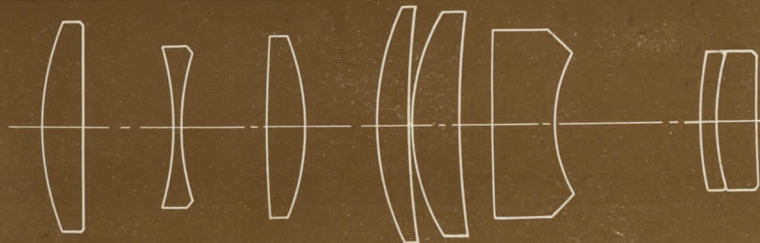
Takumar Lens f:4 500mm
An excellent telephoto lens for long distant objects and particularly suitable for astrophotography and wild-life picture



f:3.5 50mm Standard Lens



f:1.9 83mm Large Aperture Lens



f:3.5 100mm Long Focus Lens

f:3.5 135mm Telephoto Lens



High Precision Takumar

ASAHIFLEX MODEL I A

with Takumar f:3.5 50mm coated lens
including herical focusing device and
pre-set diaphragm control.....

ASAHIFLEX ACCESSORIES

Ever-ready leather case with strap

Interchangeable lenses

Takumar 58mm f:2.4

Takumar 83mm f:1.9

with leather Case.....

Takumar 100mm f:3.5

with leather Case.....

Takumar 135mm f:3.5

with leather Case.....

Takumar 500mm f:4

Extension tubes one set

Photomicrographic Adapter

Special ASAHI Flash-gun one set

Cable release.....

Reproduction kit.....